

RELIABLE WINE FILTRATION

The best way to use HOBRA products



HOBRAFILT – Depth filter sheets

Table for use

Purification level	To remove	Filtersheet type	Nominal retention	Flow rate l/m ² /hour	Max. pressure difference
Pre-filtration – purifying	coarse sludge	S 100 N	11 µm	1,000 l	3 bars
		S 80 N	8 µm		
		S 60 N	6 µm		
		S 40 N	5 µm		
		S 30 N	4 µm		
Purifying/clearing filtration	yeasts fine sludge	S 20 N	3 µm	800 l	2 bars
		S 15 N	2 µm		
Fine polishing filtration	yeasts bacteria	S 10 N	0.8 µm	500 l	2 bars
Germ reducing filtration	reduction of germs of yeasts and bacteria	ST 7 N	0.4 µm	350 – 400 l	1.2 bars
			microorganisms		
Microbiologically effective filtration	and protection of membrane cartridge	ST 5 N	0.3 µm	300 l	1.2 bars
		ST 3 N	0.2 µm		

HOBRAFILT – Brief instructions for use

Insertion of sheets – filtersheets have coarse inlet sides and fine outlet sides with a slight grid-like pattern (they contain the inscription HOBRAFILT, type of filtersheet and lot Nr.).

Flooding of sheets with water – only slightly tighten the filter and flood it with water so that the water penetrates all sides of the elements and ensure that all the sheets are properly moistened; only then tighten the filter completely.

Washing of sheets – the washing should take approximately 10 to 15 minutes in the filtering direction and with the same flow rate (l/m²/h) as the actual filtration of the product. The washing should continue until the water passing through the filter is clear and free of any waste. Use of warm water may reduce the washing time.

Filtration conditions – start-up slowly – ensure a steady and even flow – no abrupt changes of the filtering rate – observe the recommended flow rate (l/m²/h) and the maximum permissible pressure difference (see the table above) – avoid pressure shocks in the absence of filler activity (bypassing the filtrate through the pump). – if possible, avoid interrupted filtration – do not allow air aspiration.

For more detailed instructions for using HOBRAFILT filtersheets, visit our www.hobra.cz website.

CANDEFILT – filter cartridges

Candefilt – HMV/HMVP (PES membrane filter cartridge)

Candefilt – HMVS (PES membrane filter cartridge with a borosilicate pre-filter layer)

Candefilt – HPV (PP depth pre-filter cartridge)

Table for use

Filtering grade difference	To remove	Cartridge type	Retention (µm)	Max. Flow l/h (10" cartridge)	Max. work. pressure
Fine protective filtration	fine sludge	HPV	nom. 0.5	300	2 bars
			nom. 1.0	350	2 bars
Sterile microbiologically effective filtration	microorganisms	HMV+HMVS	abs. 0.2 (ZC)*	~200	2 bars
		HMV+HMVS / HMVP	abs. 0.45 (BV)**	300 / 500	2 bars
		HMV+HMVS / HMVP	abs. 0.65 (CV)***	350 / 700	2 bars

* ZC – wines with high content of residual sugar and colloids

** BV – white wines

*** CV – red wines

The most efficient protection of a membrane filter cartridge is the effect of depth filtration in sterile filtersheets (ST 7 N, ST 5 N, ST 3 N).

CANDEFILT – Brief instructions for use

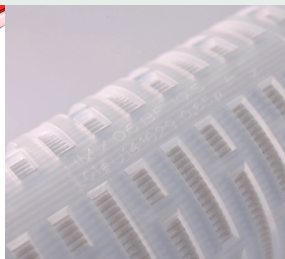
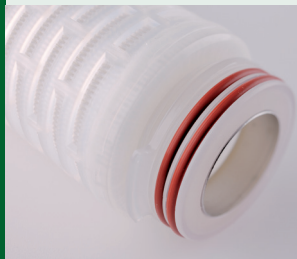
Installation – check the sealing o-rings, wet the filter saddle and cartridge or o-ring and install the cartridge by rotating it in both directions so that the o-rings are properly seated. After closing the filter fill it with filtered water and wash it for at least 5 minutes.

Storage – for short periods of time store the filter in a diluted sanitation solution; for long-term storage use a 50% alcohol solution.

More detailed instructions for the individual filter types are enclosed to filter cartridges or available at www.hobra.cz

The ideal solution for the above mentioned filtration media are HOBRA stainless steel filter equipment. The HOBRACOL sheet filter is suitable for filtersheets. The filters feature a compact design and are made of high quality stainless steel. The offer also includes an advantageous VS variant which combines high quality design and execution with an attractive price. Filtration on filter cartridges can then be performed on the compact CANDECOL filter housing. The filters (housings) are very precisely executed and made only from top quality stainless steel. Even in this case you may choose the VS variant which particularly meets the needs of the wine industry.

If interested in "made in HOBRA" filter equipment approach an official HOBRA dealer or HOBRA directly.



Hobra – Školník s.r.o
Smetanova ulice
550 01 Broumov
Czech Republic

T: +420 491 580 111
F: +420 491 580 140
E: hobra@hobra.cz
W: www.hobra.cz



RELIABLE
FILTRATION